

# Newville Historical Society

## August 2023 Newsletter

69 South High Street, Newville, PA 17241

Phone 717.776.6210 Email [NHS2011@centurylink.net](mailto:NHS2011@centurylink.net)

Hours of Operation Monday & Friday 9:00 - 11:00 am (by Appt)

### A Note from the President

Things are really, REALLY happening at your NHS. First Fridays will find the back parking lot packed and some of the volunteers rockin' on the front porch. If you haven't attended one, you'll need to get there. Different vendors and some of the same every time.

Stay tuned for more historic tours. These were certainly a hit at Christmas and for our Fountain Festival event. And if you missed the Fountain

Festival, you missed the best one ever! Our own Kathy Lloyd certainly pulled off a great event for everyone and John manned almost every wagon ride telling the story of the houses of Newville.

History Tours are a HIT! John, Rich and Betty have been able to add to our Newville Historic places and Joe has started to put tours into a pamphlet that will make even the most novice (like me) an instant tour guide!

We've received a lot of new old stuff at the society. Martina is working on getting us a grant to help with putting everything into a database. We've got a really good working relationship with the Cumberland County Historical Society and will be working with them to promote the upcoming Whiskey Tasting Event at the Historic Heishman's Mill. We've started to work with all the Historic Societies in Cumberland County to promote each other via social media and especially through Facebook. We have almost 2500 Facebook followers and our posts have reached almost 12,000 people. Our memberships are at an all-time high and our bank account is hovering around 10K. Things are looking up for our NHS and it's all because of you.

I can't thank each and every one of you enough. Our team here at NHS is currently busy working on our next endeavor. We have Wheels for Warriors coming up and possibly we're going to work with the Fire Company to continue First Fridays through the cold months.

Kim and Liz are always busy looking for sponsors and a way to keep our coffers full. Martina is busy looking for grant monies for us. Rich and Betty have been busy during our Monday and Friday open hours as people are always coming in for tours or to do research. Pat keeps our Meeting Minutes up to date and me on the correct path as our Secretary. Without her, we'd be lost for sure.

And speaking of Rich, he'll be leaving us come November. His service to NHS cannot be matched. He's kept the books balanced, filled our shelves with history and manned the place for our Monday and Friday open hours. This will be a blow to NHS, but we will overcome. We'll be searching for a replacement for open hours and for a new bookkeeper. Keep your ears and eyes open. He'll be hard to replace for sure. Big thank you to Nancy for doing the newsletter for the NHS.

Again, a huge thank you to our volunteers! Keep up the good work because it surely does show. The NHS is leading Newville by example and it's all because of our fantastic team!

(cont'd. on Page 2)

A Note From the President (cont'd. from Page 1)

As we go forward, we hope to utilize new blood here at NHS. Brenda and Bernie, Mike and Lil...so many good people stepping up to the plate, but we will always need more. If you want to be a part of the fantastic team, please let me know.

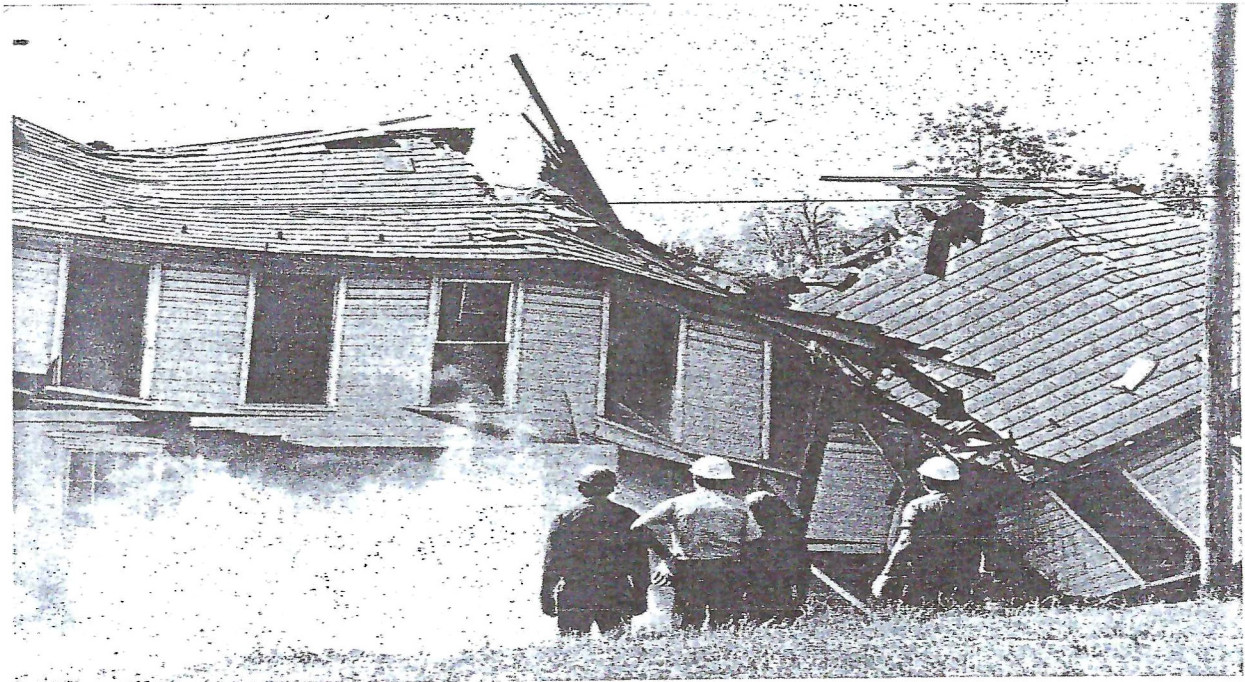
See you at our perfect little museum that's leading from the front.

Randy

## A Blast from the Past



'MILL ROW' as it appeared early in 1972. It is now the site of the Newville Medical Center.



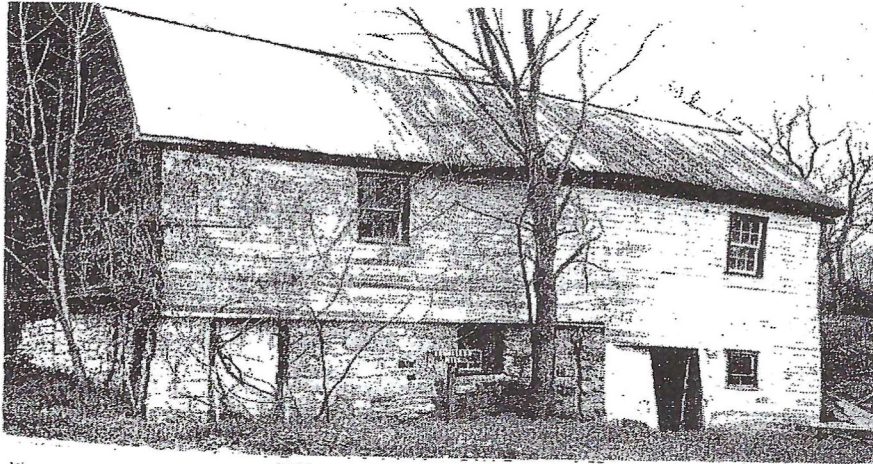
May 23, 1972

### *Mill Row comes down*

**END OF 'MILL ROW' —** With steel cable 'necktied' through windows and powered by a big bulldozer at rear of building, another section of Newville landmark begins to crack, groan, twist and fall on Vine St. in preparation for building of medical clinic on site.

Lower Mifflin Twp.

## Bailey tells history of Scouller Mill



*Two centuries*

SCOULLER MILL goes back in history of area to 18th Century.

### Scouller Mill By John R. Bailey

This mill was built by John Scouller who came to America from Scotland in 1735 and settled near the town of Muddy Run in Lancaster.

In April, 1762, Mr. Scouller bought from one of the heirs of William Penn a tract of land at the mouth of Big Run, about one mile north of Newville, where he built a log cabin near the present dam.

In the fall of 1762, Mr. Scouller started the construction of the dam and grist mill which he completed in 1763. In 1768 he built another house back of the mill in which he lived. The house stood until being destroyed by fire in 1876.

In 1780 the mill was destroyed by fire. Mr. Scouller then rebuilt and enlarged the mill that same year. Mr. Scouller hired a Mr. George Buck to help in his mill in 1782. Mr. Buck lived in the log cabin that Mr. Scouller built at the dam. One of his duties was to open the dam race at the beginning of the day and close it at the end of the day. This was done so that the dam could fill with water for the next day's work.

The mill is built of stone on the lower level. The second level is constructed of log with wood siding on the outside. The top levels are constructed of pole and beams.

The mill boasted a large undershot wheel which was located on the north side of the mill. The mill hosted two French burr grindstones.

During the mid-1800's the mill underwent considerable modernization. The mill was enlarged and two new burrstones were installed; a sifter, a wooden auger and a conveyor system were also installed. The wooden undershot water wheel was replaced by a new steel wheel that was installed and enclosed. A drying shed was built to the back of the mill for storing and drying corn. A French burrstone was installed in the lower level of the drying shed to grind corn meal.

(cont'd. on Page 4)

## Scouller Mill (cont'd. from Page 3)

The grinding wheel in the drying shed was powered by an overhead shaft from the water wheel in the mill.

There was also a saw mill located in the front of the mill. The saw mill was also powered by an overhead shaft from the water wheel in the mill.

To the north side of the mill a small building was constructed to house a hydraulic cider press. The press was later moved into the lower level of the mill.

The mill also had a coffee grinder in which coffee beans could be ground and then sold.

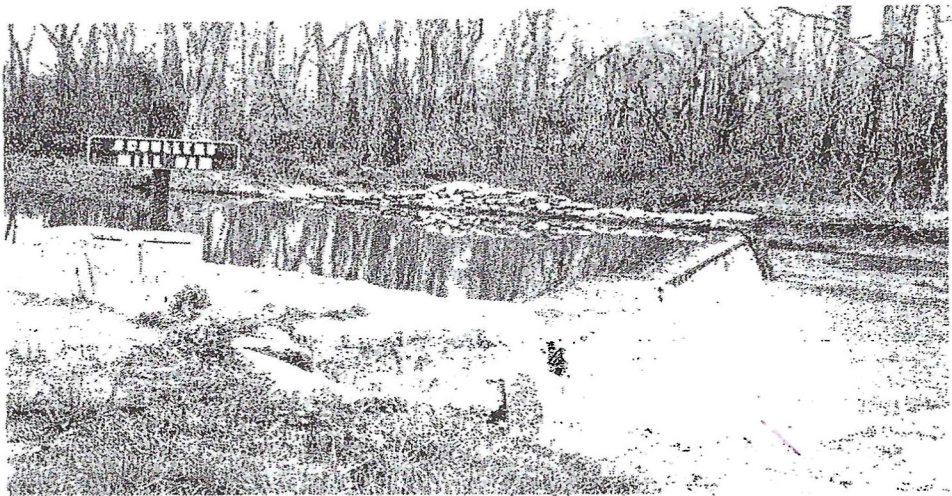
The mill was highly praised for its very super fine flour, an excellent quality cornmeal and buck wheat flour.

The mill had numerous owners and operators throughout its past. Some of them were John Scouller, William Scouller, Tom Scouller, Robert Bleam, Peter Ahl, James Woods, Frank Woods, Daniel Whales, Bloser, Ernest Forney and Glenn Mixell.

Ernest Forney was the last to operate the mill.

The wheels turned for the last time for the last bag of flour in 1944. After Mr. Forney closed the mill he then built pens in the back of the mill and raised pheasants for the Game Commission. The mill was sold to its present owner in April, 1958.

The water wheel is gone now, as well as most of the equipment that was used in the age-old industry.



### *On Center Road*

**MILL DAM construction started in 1762.**

We will never hear again the splashing of the water over the wheel, or hear the creaking of the timbers as the huge grinding wheels turned, nor will we ever smell again the sweet smell of the warm freshly ground flour.

The mill is idle now as if in a state of rest after a long struggle to survive.

This mill has proudly stood the test of time. It stands proudly throughout the history of our valley through the good and bad times.

The mill is now in much need of repair due to neglect and deterioration. It is to much despair and sorrow that this proud structure will not last for future generations to see and study.

We have lost many mills which dotted the countryside in the past.

(cont'd. on Page 5)

Scouller Mill (cont'd. from Page 4)

Each time we lose a mill we lose a part of our past and the history that made us all what we are today.

Hopefully, someday, we will see history repeat itself and we will find a place in the future for the mills to prosper as they have in the past.

For it was one said, "That the grist mill makes the staff of life."

=====  
John R. Bailey of Newville is an enthusiastic student of area history and has been engaged in a number of historical research projects. He also manages Bailey's 18<sup>th</sup> Century Home Restoration.  
=====

\*\* Shared from a Newspaper article by Mr. Bailey.

~ ~ ~ ~ ~

**Update NHS Directory**

We would like to update each member's contact information in the Newville Historical Society Directory to make it current. This would include: mailing address, phone number, and email address. If you have any changes or new information to add, please submit to: [NHS2011@Centurylink.net](mailto:NHS2011@Centurylink.net) or snail mail to : Newville Historical Society, 69 South High St., Newville, PA 17241.

Also, a friendly reminder: if you have not paid your dues for 2023, please do so as soon as possible.

~ ~ ~ ~ ~

**Mark Your Calendars with upcoming events:**

1<sup>st</sup> Friday of each month thru October - First Fridays Market

September 16 Newville Wheels for Warriors NHS will be serving BBQ Chicken dinners

October 28 Graveyard Tour

December 9 Wagon Rides with Benchfield Farms and vendors in back of NHS.

## Mountain to Mountain



On May 6<sup>th</sup>, after collecting many donations from different motorcycle organizations, the NHS in conjunction with the Legion Riders, set off from the American Legion Post in Newville with almost 50 bikes (we would end with a little less than that number). We transversed the back roads, enjoying the green foliage and beautiful landscapes, taking turns road blocking at intersections until we hit our first stop which was the Army Corps of Engineers Camp, turned into the Japanese and German POW camp, turned into the church camp. David Smith led his shortened version as we hiked to the many foundations, and he explained each one in detail. Except for one semi dangerous serpent on the way back, we climb on our bikes and headed to the Sheetz in Shippensburg, all the while enjoying the views and the back roads. Full belly's and we headed for Camp Yoliwja where Steve Long gave us a presentation on the wonderful tavern, turned hotel, turned church camp and life there in the 18<sup>th</sup>, 19<sup>th</sup>, and 20<sup>th</sup> centuries. From there we headed straight to the Newville Lions Fairground where we were entertained to the music provided by Jack's Back and enjoyed Chicken BBQ dinners provided by the volunteers of the NHS.

Outside of a couple of break dons, it was a wonderful collaboration and a fantastic ride for sure!

Randy

